

CLIENT

**COUNTY OF
UNION CONST.
MRM
ARCHITECTURE**

LOCATION:

Union County, NJ

CONSTRUCTION VALUE:
\$12 Million

DESIGN START:
2003

DESIGN COMPLETE:
2005

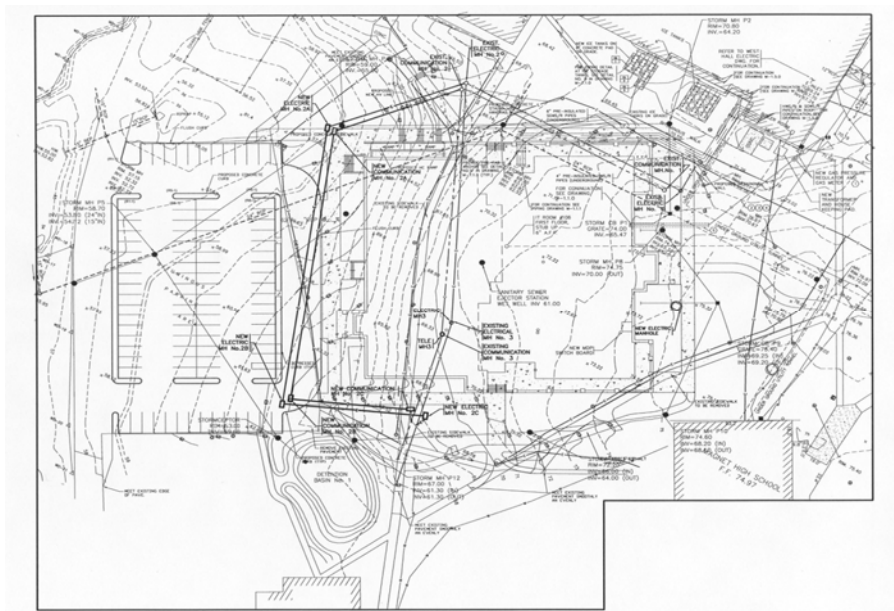
**CONSTRUCTION
COMPLETE:**
2005

SCOPE OF WORK

Design and Administer Construction of \$3.8 Million in MEP Systems for New School.

PROJECT DESCRIPTION

This project required the design of new MEP systems and site utilities for a new school. The design work included extensive underground manhole systems for 15KV circuits and communication cables, electrical distribution, HVAC, boilers, plumbing, fire protection and detection, energy controls and telecommunications systems. HVAC design includes a 172-ton chiller system.



Union County Vocational Technical School Underground Utilities Plan