

CLIENT

**PARSONS
BRINKERHOFF
NJ TRANSIT**

LOCATION:

Newark, NJ

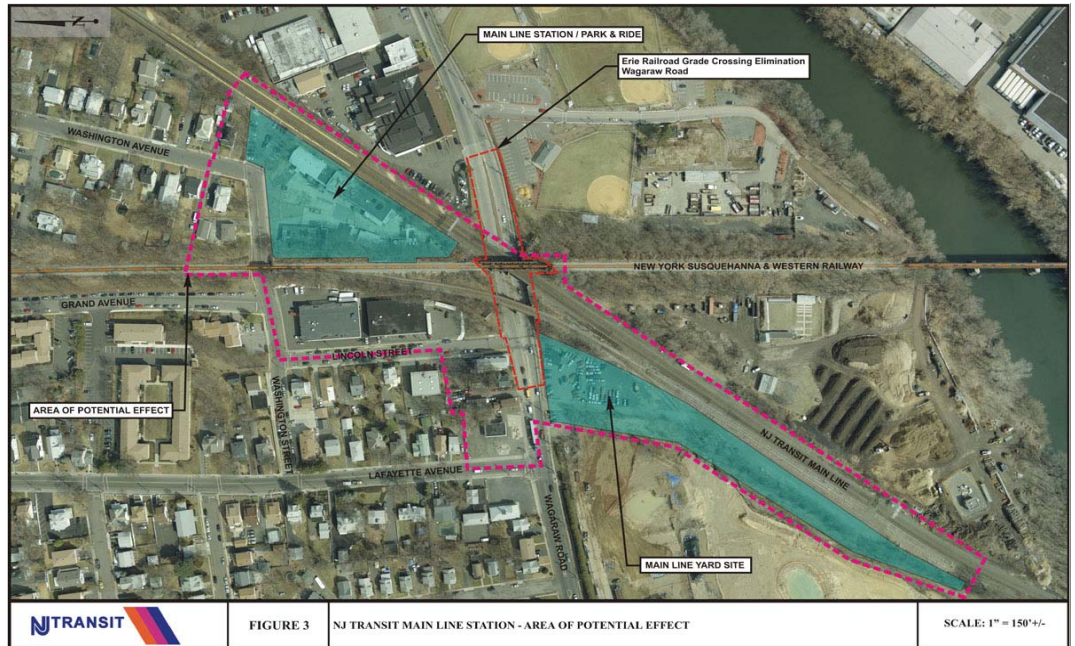


FIGURE 3 NJ TRANSIT MAIN LINE STATION - AREA OF POTENTIAL EFFECT

SCALE: 1" = 150' +/-

CONSTRUCTION VALUE:
\$150 Million

DESIGN START:
2005

DESIGN COMPLETE:
2007

**CONSTRUCTION
COMPLETE:**
2008

SCOPE OF WORK

Design of a new MEP Systems for new yard maintenance repair shop, car washing/fueling facility and crew quarters.

HISTORY

The project involves the restoration of passenger rail services between Route 208 in Hawthorne and river Street in Hackensack. This bi-county alignment is approximately 10.2 miles, traversing six urbanized municipalities. In addition to the proposed track and signal work, project components include 12 new stations, yard maintenance and repair shop for running repairs, car washing/fueling facility, crew quarters and ride facilities.

SOLUTION

A&J Consulting Engineering Services, P.C is designing the Mechanical, Electrical, Fire Protection and Plumbing systems for the yard maintenance and repair shop, car washing and fueling facility and crew quarters. Design of the new MEP system is done as per New Jersey Building Codes